

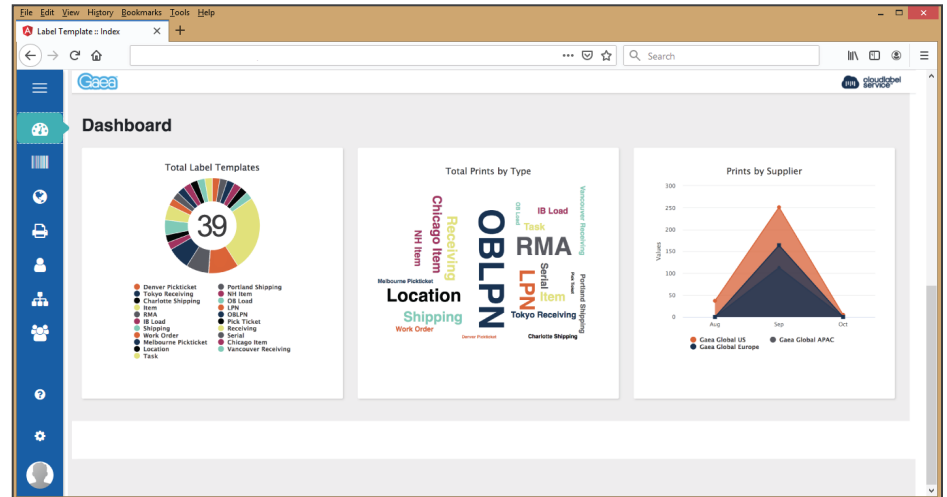
SUPPLY CHAIN LABELING SIMPLIFIED

Introducing Cloud Label Service (CLS)

Cloud Label Service is a cloud subscription that gives organizations the freedom and flexibility to easily manage the label lifecycle.

Collaborate with suppliers and share label templates to ensure that all stakeholders have current, correct label templates.

Eliminate emailing and mailing mass labels forever. Increase efficiency and reduce label misprint costs!



Any Label Type, Any Size, Any Format

CLS manages ZPL-designed label templates. This collaboration platform allows all departments, internally and externally (e.g. suppliers), to view, cooperate, manage, share, and print or email labels for warehouse execution. Any labels used by your supply chain process can be managed and printed in Cloud Label Service. CLS offers out-of-the-box (OOTB) label templates for:

- Item
- Receipt
- Reverse logistics (RMA)
- Pallet / LPN
- Pick ticket

Additional label templates can be uploaded for any company-created or company-specific templates.

All label templates and types within these common industries (and others) can be uploaded and managed with CLS.



Additional templates that can be uploaded include any customer or distributor-specific and custom or special-order templates.

Collaboration Improves Efficiency

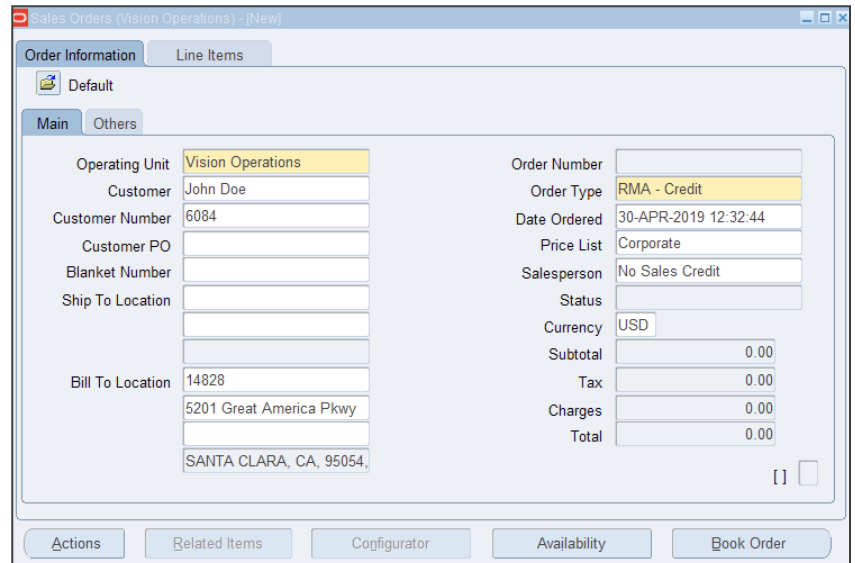
Cloud Label Service enables true collaboration across the entire supply chain. Internal users and external suppliers have the latest label template version at their fingertips with the right data from your supply chain management systems.

Seamless Integration Leverages Supply Chain Management (SCM) Applications

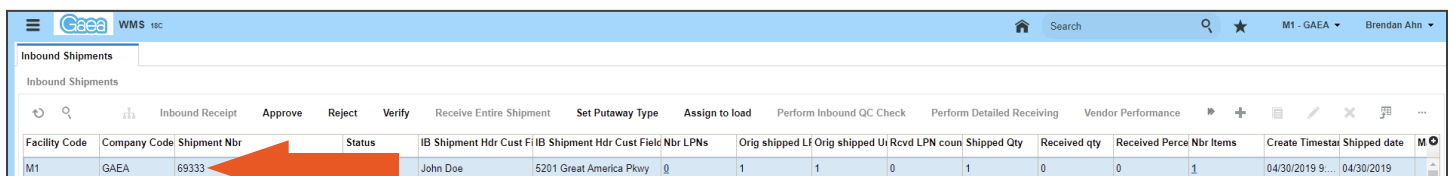
Cloud Label Service includes adapters for Oracle E-Business Suite (EBS) and Oracle Supply Chain Management (SCM) Cloud applications for rapid integration. CLS also facilitates coexist implementations of EBS SCM and Oracle Warehouse Management (WMS) Cloud.

CLS integrates with Oracle EBS SCM applications to deliver easy, seamless return materials authorization (RMA) processing and a pleasant customer experience.

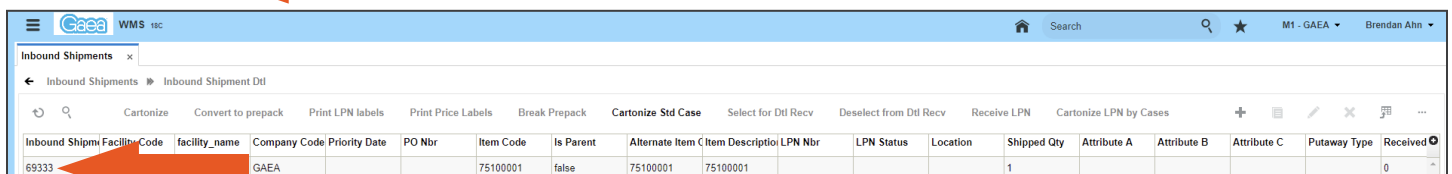
RMA data is automatically shared (screenshots below) with Cloud Label Service and Oracle WMS Cloud. CLS then automatically produces a label your warehouse management team can match with the returned materials.



initiating an RMA in Oracle E-Business Suite



Facility Code	Company Code	Shipment Nbr	Status	IB Shipment Hdr Cust F	IB Shipment Hdr Cust Field	IB Shipment Nbr LPNs	Orig shipped LF	Orig shipped U	Rcvd LPN coun	Shipped Qty	Received qty	Received Perce	Nbr Items	Create Timesta	Shipped date
M1	GAEA	69333		John Doe	5201 Great America Pkwy	0	1	1	0	1	0	0	1	04/30/2019 9...	04/30/2019

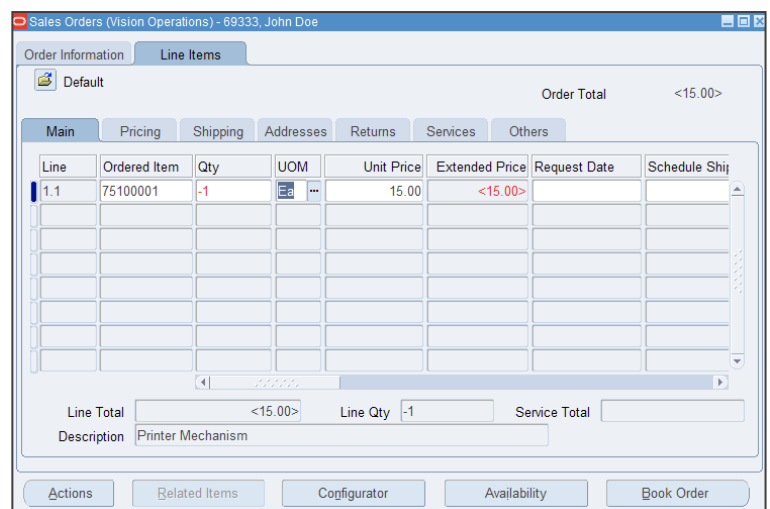


Inbound Shp	Facility Code	facility_name	Company Code	Priority	Date	PO Nbr	Item Code	Is Parent	Alternate Item C	Item Description	LPN Nbr	LPN Status	Location	Shipped Qty	Attribute A	Attribute B	Attribute C	Putaway Type	Received
69333	GAEA						75100001	false	75100001	75100001				1					0

RMA data is automatically shared with Cloud Label Service and Oracle WMS Cloud

Integrate With Any Source System

In addition to our packaged integration with Oracle applications, our onboarding experts will integrate Cloud Label Service with any third-party system you choose, cloud-based or on-premise. Cloud Label Service will deliver anything your label designer can design to the right stakeholders at the right time in the right format.



information is updated in Oracle EBS

Why Cloud Label Service?

- Whether your products are labeled with serial numbers, lot numbers or simply SKUs, CLS ensures the right information is on the right label, right where you need it.
- The labels you need for items, item receipts, item fulfillments, and sales orders can all be printed in your desired formats and sizes.
- CLS delivers the same quality of integrated returns service as used by billion-dollar retailers for as little as 1 cent per label.
- Avoid chargebacks! CLS helps ensure you are always compliant with the mandates of your customers or distributors.
- Cloud Label Service will deliver anything your label designer can design to the right stakeholders at the right time in the right format.

Benefits

- Reduce labeling costs
- Improve regulatory and customer compliance
- Increase supplier collaboration
- Improve customer satisfaction
- Increase efficiency
- Eliminate errors
- Freedom to focus on other supply chain challenges

CLOUD LABEL SERVICE ARCHITECTURE



5 EASY STEPS TO LABEL PRINTING PERFECTION



UPLOAD LABEL
template(s) to cloud



SHARE LABEL
with suppliers,
other users



TEST and VERIFY
supplier prints test labels
and verifies accuracy

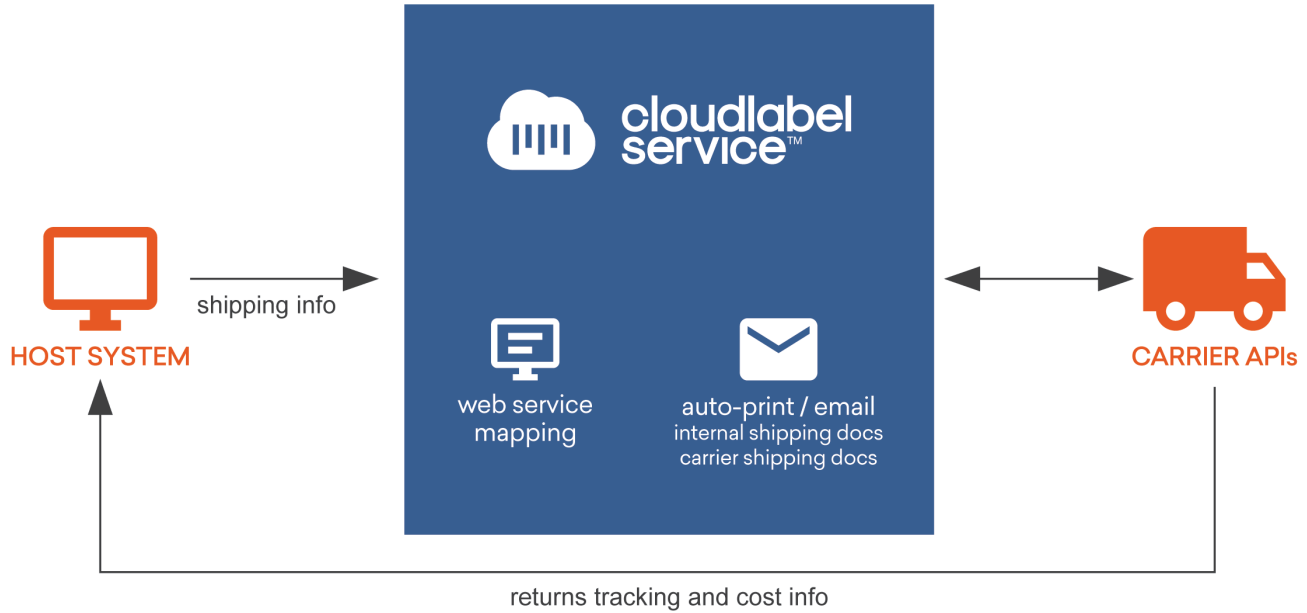


IMPORT
label data

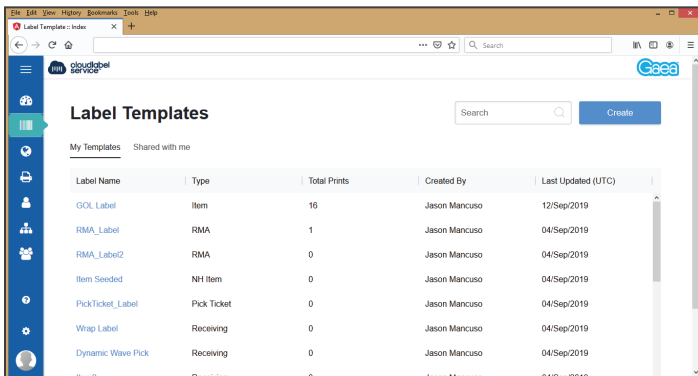


PRINT LABELS
process complete!

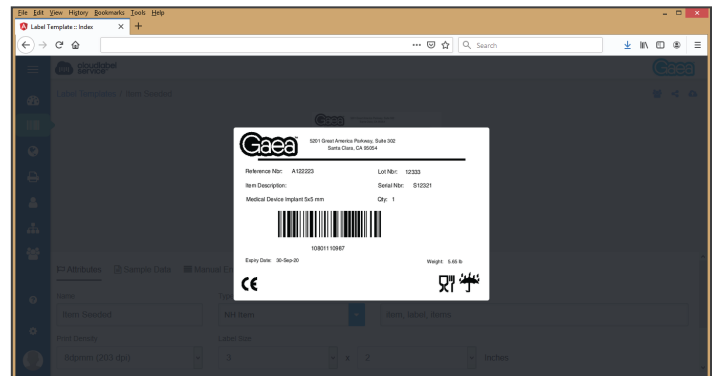
CLOUD LABEL SERVICE CARRIER INTEGRATION



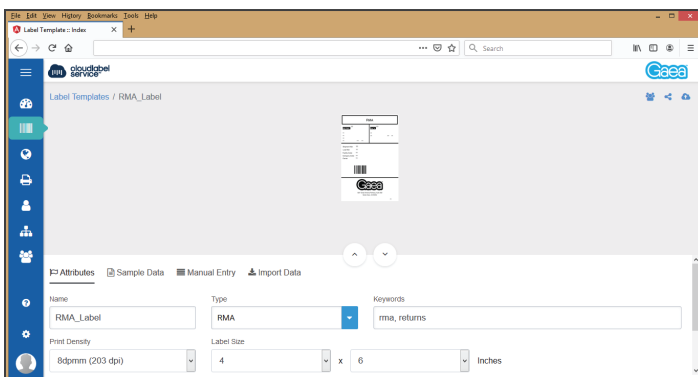
SAMPLE CLOUD LABEL SERVICE SCREENS



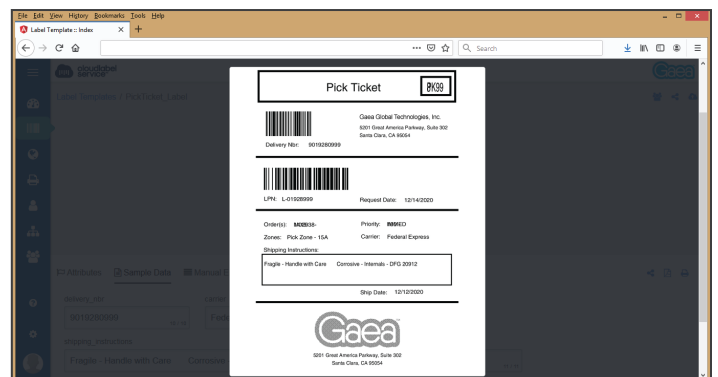
create and share label templates



review live data on an item label



edit, import, and review RMA label data



review live data on a pick ticket label

CLOUD LABEL SERVICE DETAILS

Features

- Label upload
- Oracle Supply Chain Management connection, Cloud and On-Prem
- Industry-standard templates
- Automatically print labels based on business rules and processes
- View, test, print
- Field-mapping utility
- Map label printers
- Data mapping events
- Integration with SCM systems
- Cloud subscription

Automate Reverse Logistics (RMA) Flow

- RMA order is booked in source system, data mapping sends to cloud labels and host system (EBS or Cloud)
- CLS auto-emails RMA label template to customer to be included with returned package
- Host system creates a record ready to receive the RMA

Auto-Print Labels Based on Business Events

Automatically print labels based on business events including wave release, receipts, and shipping confirmations.

As orders are released / waved and allocated, data mapping sends task and order info to auto-populate and print labels.

Label Templates

- Upload label template files
- View uploaded templates
- Parse .zpl file into viewable .png
- Manually view and print templates to confirm label appearance with entered data
- Print .pdf labels from manually entered data or .csv data uploads

Supported Barcode Formats

All ZPL-created label templates including, but not limited to:

- 1D, 2D
- GS1
- Code 39
- Code128
- DataMatrix
- EAN-8/EAN-13
- PDF417
- QR Code
- UPC-A
- UPC-E

Prerequisites

- ZPL label printer
- ZPL label design system
- Internet access
- Chrome or Firefox

Oracle Hosting and Security

Cloud Label Service is an Oracle Cloud-hosted, multi-tenant application utilizing Oracle infrastructure-as-a-service (IaaS) and security. Stringent authorization and access controls are built into CLS running on the MEAN stack.

Contact Us Today

Gaea's decades of experience with supply chain management and warehouse management solutions empower us to help your organization hit the ground running quickly and accurately. We analyze your processes and implement the features that will provide unprecedented flexibility and cost savings in your business operations.

Email us at sales@cloudlabelservice.com.

